

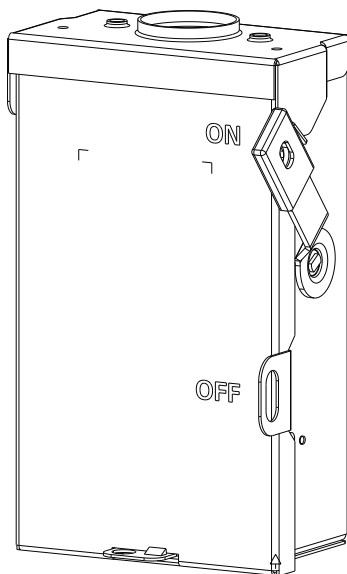
# SIEMENS

Data Sheet

## General Duty Safety Switch

30A 240V, Type 3R, Non-fusible,  
Oversize, Oversize Plus

[usa.siemens.com/switches](http://usa.siemens.com/switches)



**Note:** Image is representative only, refer to dimensional drawing for details.

### Standards and Ratings

- UL Listed under file #E4776
- Meets UL98 for switches and UL50 for enclosures
- Meets NEMA Standard KS-1 for enclosed switches
- Meets NEC wire bending space requirements
- Suitable for use as service entrance equipment

### Features

- Rated 10,000 AIC with Class K fuses or H fuses or rated 100,000 AIC with Class R fuses
- Quick-make and break switching action
- Double break visible blade design
- Oversized enclosure (60% greater volume compared to GNF321RA)
- Oversize Plus enclosure (140% greater volume compared to GNF321RA)
- Oversized lugs

# Product Specifications

## General Duty 30A 240V, Type 3R

General Information		
Catalog Number	Description	Shipping Weight in lbs. (std. package qty.)
GNF321RLA	General Duty Enclosed Switch, Oversize	30 (10)
GNF221RLA	General Duty Enclosed Switch, Oversize	30(10)
GNF321RLLA	General Duty Enclosed Switch, Oversize Plus	20 (5)
GNF221RLLA	General Duty Enclosed Switch, Oversize Plus	20 (5)

Horsepower Ratings		
250V DC	1 Phase, 240V AC	3 Phase, 240V AC (3 pole only)
5	3	7.5

Accessories & Hub Kits	
Catalog Number	Description
ECHA075 ①	0.75" Type "HA" Outdoor Hub
ECHA100 ①	1.00" Type "HA" Outdoor Hub
ECHA125 ①	1.25" Type "HA" Outdoor Hub
HG61234 ②	Ground Lug Kit 30-200A
HN22A	Neutral Kit

Wire Torque Information		
Application	Wire Size	Nominal Torque
Mechanical Lug - Wire Connector ③	14 -10 AWG	35 lb.-in.
	8 AWG	40 lb.-in.
	6 AWG	45 lb.-in.

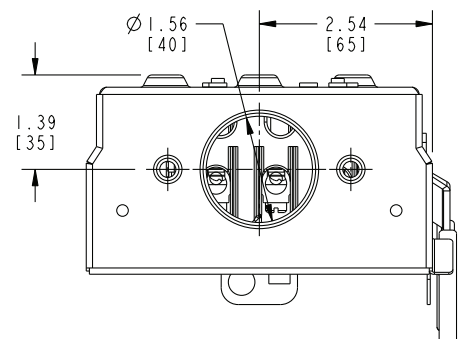
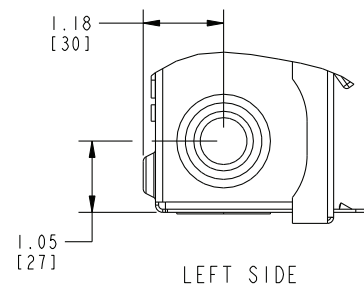
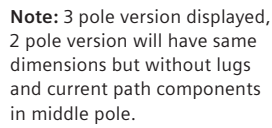
Mechanical Lug Wire Ranges ②		
Description	Wire Range with Wire Bending Space per NEC® requirements	Lug Wire Range
Line and Load Terminals	14 - 6 AWG	14 - 2 AWG

① Use closure plate screws provided to mount hubs.

② See "Wire Torque Information" table for specific wire torque values.

③ Use Cu/Al 60°/75° C Wire.

**General Duty 30A 240V, Type 3R, Oversize**

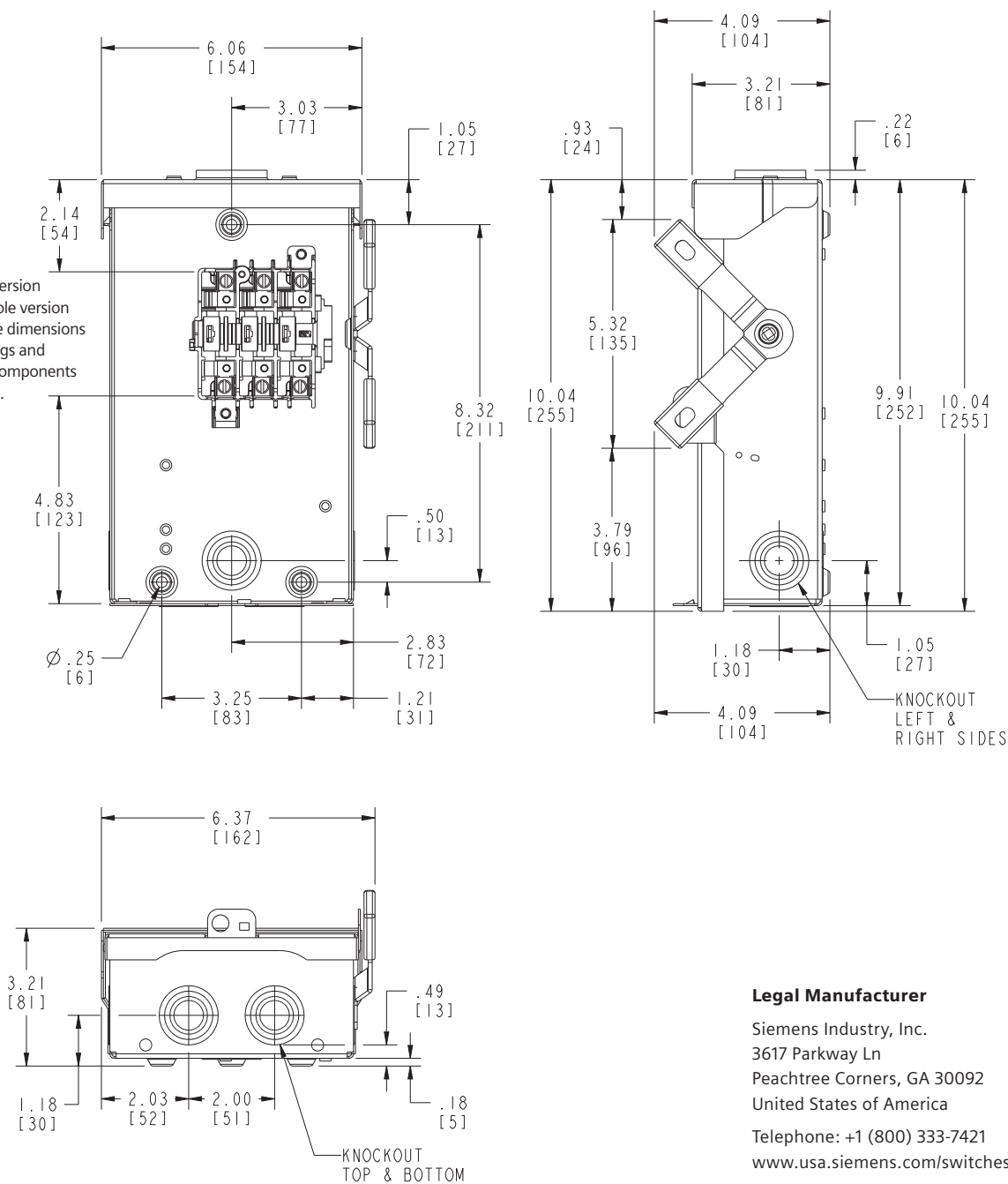


CONCENTRIC KO CONDUIT SIZES:  
1/2", 3/4", 1"

# Dimension Drawing

## General Duty 30 240V, Type 3R Oversize+

**Note:** 3 pole version displayed, 2 pole version will have same dimensions but without lugs and current path components in middle pole.



TYPE 3R ENCLOSURES:  
Cold Rolled Steel

KNOCKOUT SIZE	CONDUIT SIZE
CONCENTRIC KO	1/2", 3/4", 1"

### Legal Manufacturer

Siemens Industry, Inc.  
3617 Parkway Ln  
Peachtree Corners, GA 30092  
United States of America

Telephone: +1 (800) 333-7421  
[www.usa.siemens.com/switches](http://www.usa.siemens.com/switches)

Order No. SSFL-GN32R-0222  
© 02.2022, Siemens Industry, Inc.

This document contains a general description of available technical options only, and its effectiveness will be subject to specific variables including field conditions and project parameters. Siemens does not make representations, warranties, or assurances as to the accuracy or completeness of the content contained herein. Siemens reserves the right to modify the technology and product specifications in its sole discretion without advance notice.